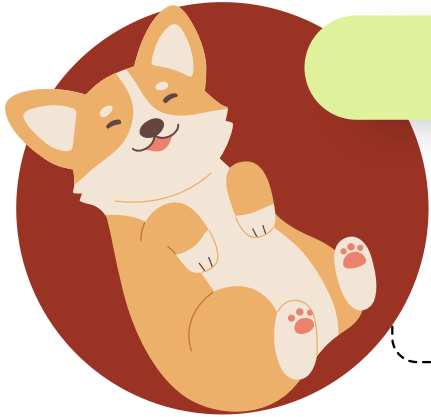


# Farmer Frankie's Password Tips

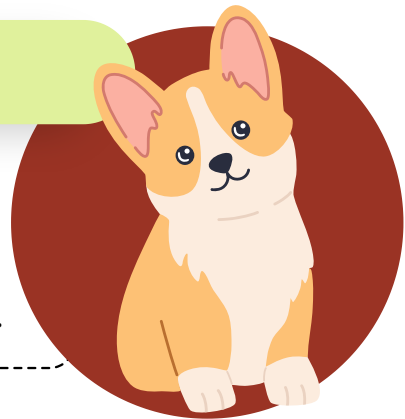


## Use characters

Use at least 16 characters for passwords, with a variety of symbols, numbers, and capitalization.

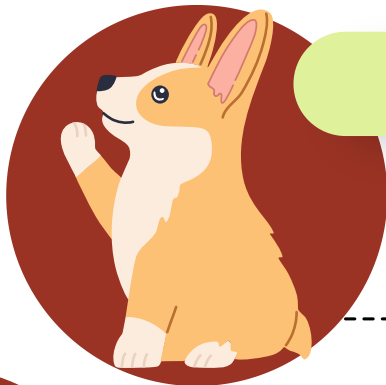
## Tell a story

One easy way to make a password is to tell a story. Maybe you adopted Fluffy (Flu) from the shelter (#) Christmas (Mas) in 2022. Make your password Flu#mas22.



## Replace letters

Another strategy is to replace letters with similar looking symbols. For example: 22F!uffy.



## Resources

- [cyberhouserock.info](https://cyberhouserock.info)
- [cisa.gov/resources-tools/training/formulate-strong-passwords-and-pin-codes](https://cisa.gov/resources-tools/training/formulate-strong-passwords-and-pin-codes)

