

PASSWORD PERILS



Public Wi-Fi

When accessing sensitive accounts, avoid using public Wi-Fi networks. Instead, use a VPN to encrypt your connection and prevent attackers from intercepting your passwords.



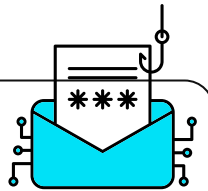
Passwords

Create passwords that are long, complex, and unique for each account. Avoid easily guessable passwords like birthdays or common phrases.



MFA/2FA

Use multi-factor authentication (MFA), to add an extra layer of security. Even if an attacker gets your password, they would still need the second factor (e.g., a code sent to your phone) to access your account.



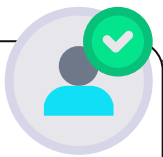
Phishing

Be cautious when clicking on links in emails or messages. Always verify the sender's authenticity, and avoid entering login credentials on suspicious websites.



Software

Protect your devices with updated anti-malware software to prevent keyloggers and other malicious software from recording your keystrokes.



Verify

Never share your password over the phone or email, especially when receiving unsolicited requests. Always verify the identity of the person asking for sensitive information.

Resources:

- cisa.gov/shields-up
- fbi.gov/how-we-can-help-you/scams-and-safety/common-frauds-and-scams
- cyberhouserock.info